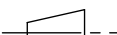
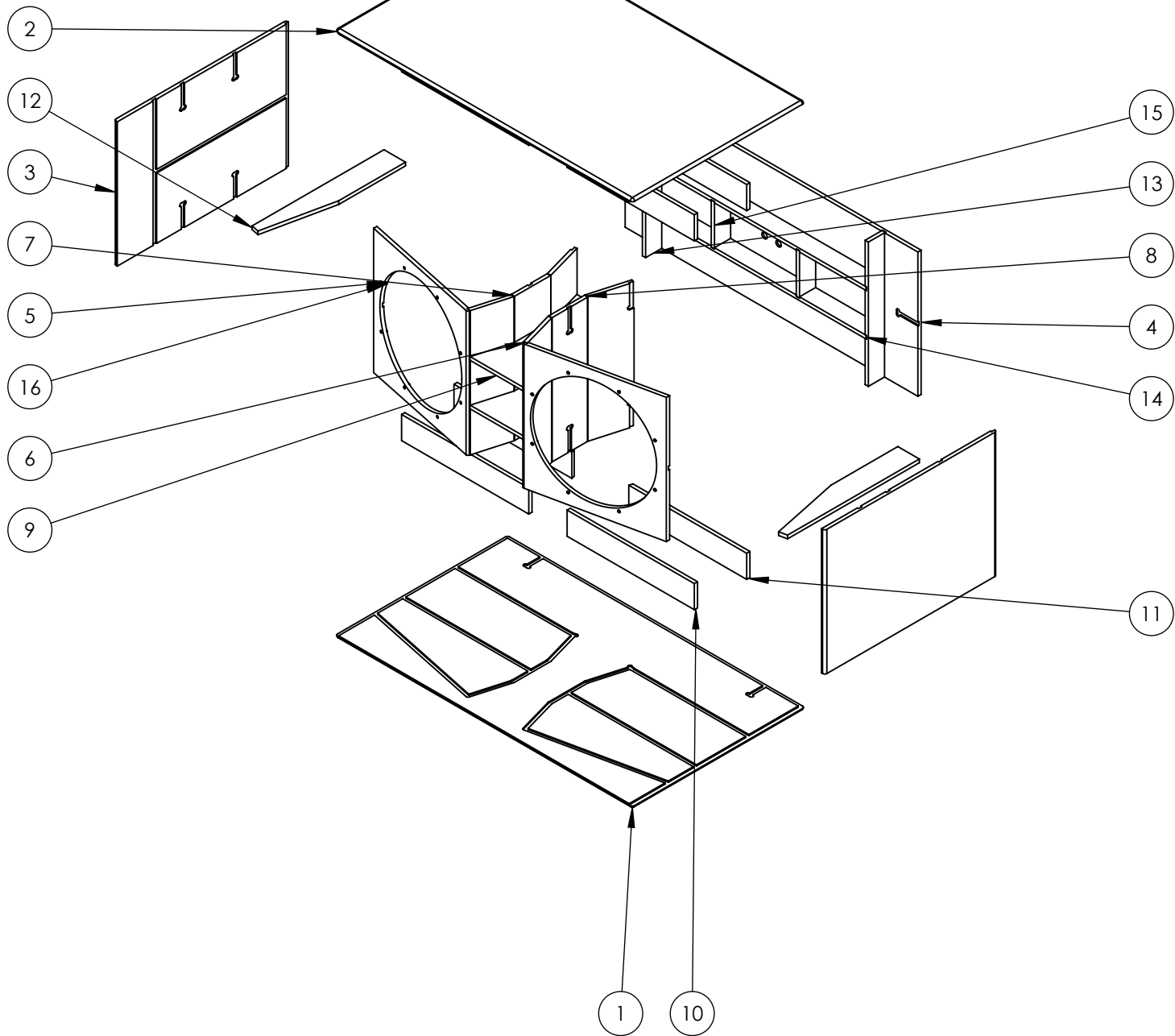


CONFIDENTIAL - ALL RIGHTS RESERVED  
Reproduction or issue to third parties is not permitted without the written permission of the owner

Project:  221DRS				Version  v.1	A3		Scale: 1:10		Revision: R.0	
					Weight (Kg):		85.78			
Tolerances (ISO 2768-mK) Holes + / Shaft - : 0.2 Chamfer/Fillet/Round: [0.5-3 ±0.2] [3-6 ±0.5] [>6 ±1] Angle: [<=10 ±1°] [10-50 ±30'] [50-120 ±20'] [120-400 ±10'] Linear: <6      6-30      30-120      120-400      400-1000      1000-2000      2000-4000 ±0.1      ±0.2      ±0.3      ±0.5      ±0.8            ±1.2            ±2					Drawn	GC	24/04/2020		First Angle Proj. 	
					Check	GL	23/06/2020			
					APPR.	MDC	23/06/2020			



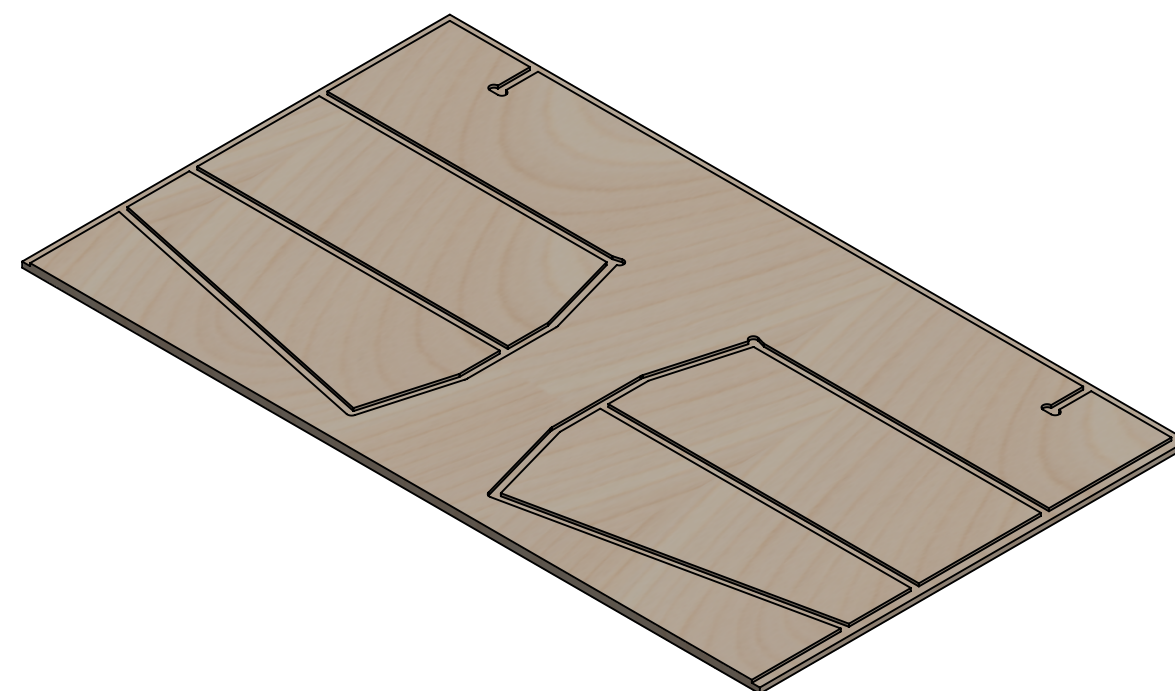
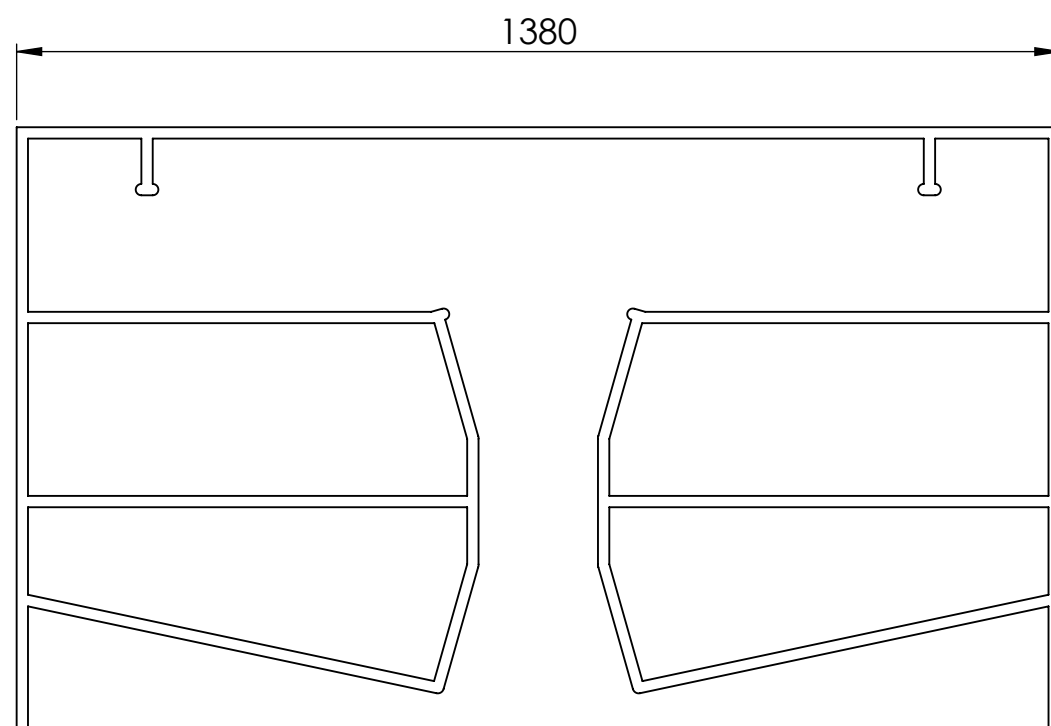
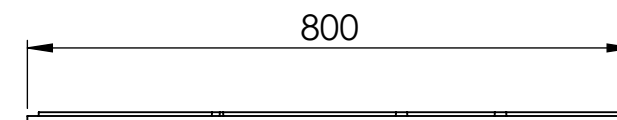
PRODUCTION COMPONENTS BOM			
ITEM NO.	PART NAME	Part description	QTY
1	221DRS_Base	Base	1
2	221DRS_Base	Base	1
3	221DRS_Side	Side	2
4	221DRS_Back	Back	1
5	221DRS_Baffle	Baffle	2
6	221DRS_Front-Reflex	Front reflex	2
7	221DRS_Mid-Reflex	Mid Reflex	2
8	221DRS_Back-Reflex	Back Reflex	2
9	221DRS_Reflex-Support	Refelx support	2
10	221DRS_Base-Reinf-1	Base reinf 1	4
11	221DRS_Base-Reinf-2	Base reinf 2	4
12	221DRS_Side-Reinf	Side reinf 1	2
13	221DRS_Back-Reinf-1	Back reinf 1	2
14	221DRS_Back-Reinf-2	Back reinf 2	2
15	221DRS_Back-Reinf-3	Back reinf 3	2
16	M8 T-Nuts		16

CONTRALTO-AUDIO S.R.L

CONFIDENTIAL - ALL RIGHTS RESERVED  
Reproduction or issue to third parties is not permitted without the written permission of the owner



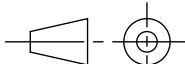
Project:  221DRS	Version  v.1	A3		Scale: 1:20	Revision: R.0
		Weight (Kg):		85.78	
<b>Tolerances (ISO 2768-mK)</b> <b>Holes + / Shaft - : 0.2</b> <b>Chamfer/Fillet/Round:</b> [0.5-3 ±0.2] [3-6 ±0.5] [>6 ±1] <b>Angle:</b> [<=10 ±1°] [10-50 ±30'] [50-120 ±20'] [120-400 ±10'] <b>Linear:</b> <6      6-30      30-120      120-400      400-1000      1000-2000      2000-4000 ±0.1      ±0.2      ±0.3      ±0.5      ±0.8      ±1.2      ±2		Drawn	GC	24/04/2020	<b>First Angle Proj.</b> 
		Check	GL	23/06/2020	
		APPR.	MDC	23/06/2020	
					Page 2 of 17

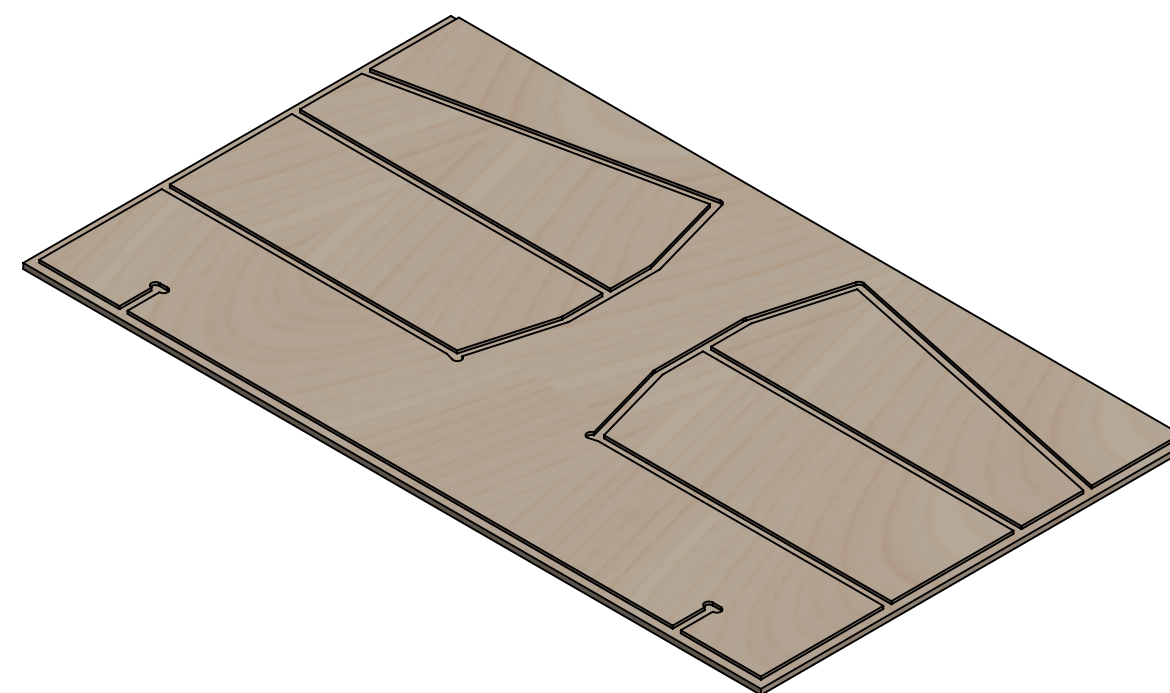
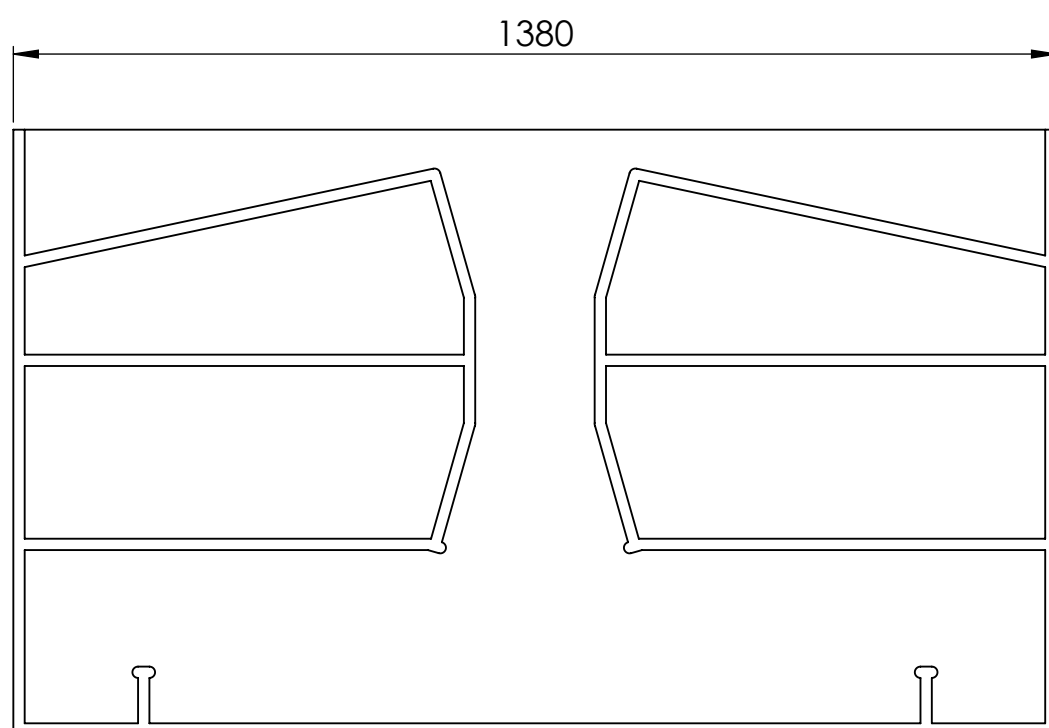
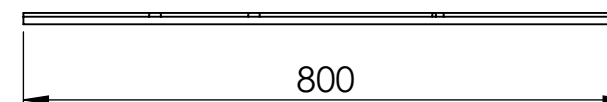


CONFIDENTIAL - ALL RIGHTS RESERVED

Reproduction or issue to third parties is not permitted without the written permission of the owner



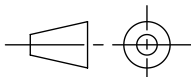
<b>Project:</b> 221DRS		<b>Version:</b> v.1		<b>A3</b>		<b>Scale:</b> 1:10		<b>Revision:</b> R.0	
<b>Part name:</b> 221DRS_Base				<b>Weight (Kg):</b> 11.36		<b>Volume (L):</b> 16.00			
<b>Part description:</b> Base				<b>Material:</b> Birch Plywood 15mm					
<b>Tolerances (ISO 2768-mK)</b> <b>Holes + / Shaft - : 0.2</b> <b>Chamfer/Fillet/Round:</b> [0.5-3 ±0.2] [3-6 ±0.5] [>6 ±1] <b>Angle:</b> [<=10 ±1°] [10-50 ±30°] [50-120 ±20°] [120-400 ±10°]				<b>Drawn</b>	GC	24/04/2020	<b>First Angle Proj.</b> 		
				<b>Check</b>	GL	23/06/2020			
				<b>APPR.</b>	MDC	23/06/2020			
<b>Linear:</b>		<6 ±0.1	6-30 ±0.2	30-120 ±0.3	120-400 ±0.5	400-1000 ±0.8	1000-2000 ±1.2	2000-4000 ±2	Page 3 of 17

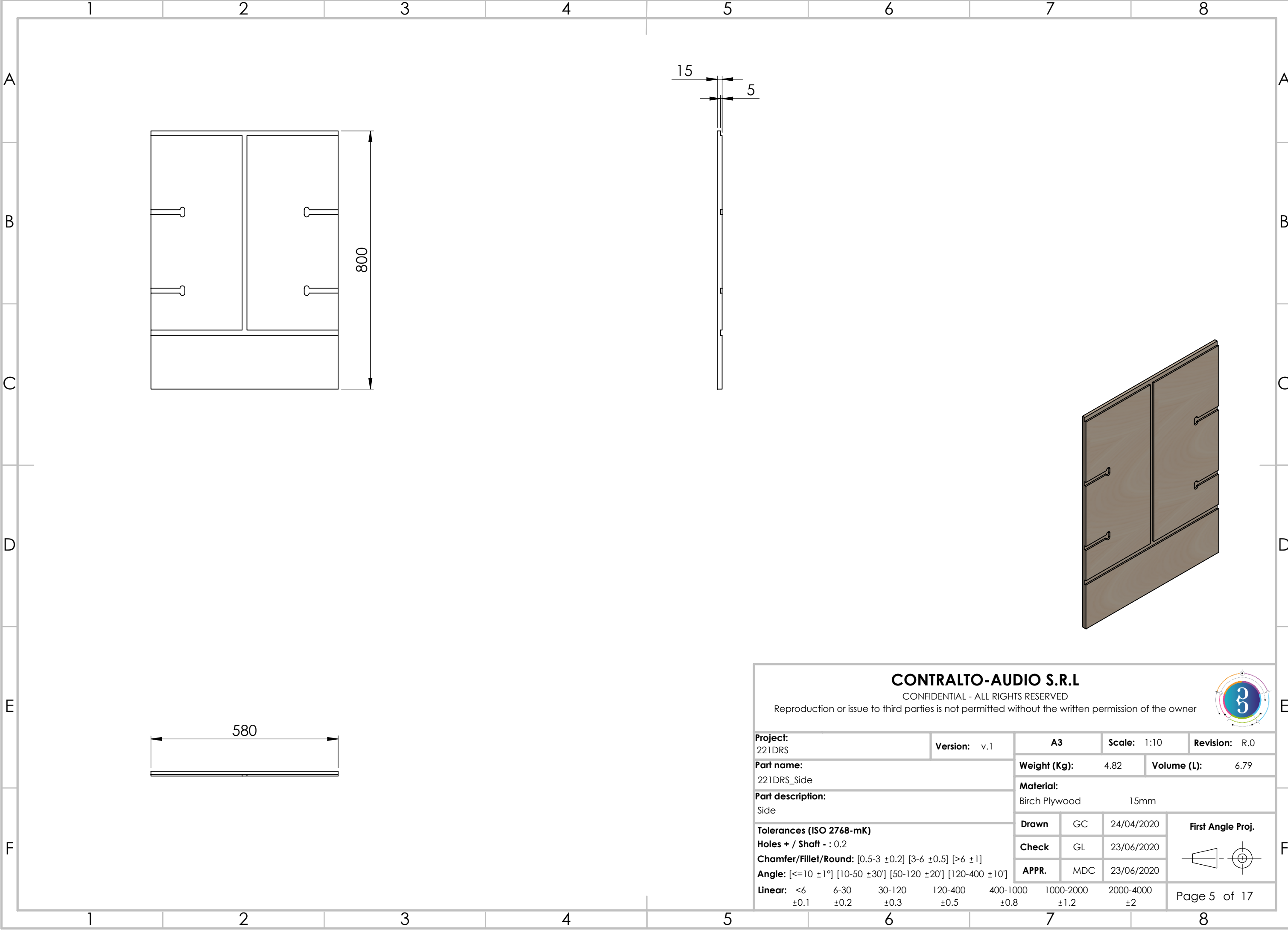
**CONTRALTO-AUDIO S.R.L.**

CONFIDENTIAL - ALL RIGHTS RESERVED

Reproduction or issue to third parties is not permitted without the written permission of the owner



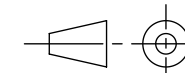
<b>Project:</b> 221DRS	<b>Version:</b> v.1	<b>A3</b>		<b>Scale:</b> 1:10	<b>Revision:</b> R.0
<b>Part name:</b> 221DRS_Base		<b>Weight (Kg):</b> 11.36		<b>Volume (L):</b> 16.00	
<b>Part description:</b> Base		<b>Material:</b> Birch Plywood 15mm			
<b>Tolerances (ISO 2768-mK)</b> <b>Holes + / Shaft - : 0.2</b> <b>Chamfer/Fillet/Round:</b> [0.5-3 ±0.2] [3-6 ±0.5] [>6 ±1] <b>Angle:</b> [<=10 ±1°] [10-50 ±30°] [50-120 ±20°] [120-400 ±10°] <b>Linear:</b> <6      6-30      30-120      120-400      400-1000      1000-2000      2000-4000 ±0.1      ±0.2      ±0.3      ±0.5      ±0.8      ±1.2      ±2		<b>Drawn</b>	GC	24/04/2020	<b>First Angle Proj.</b> 
		<b>Check</b>	GL	23/06/2020	
		<b>APPR.</b>	MDC	23/06/2020	
		Page 4 of 17			

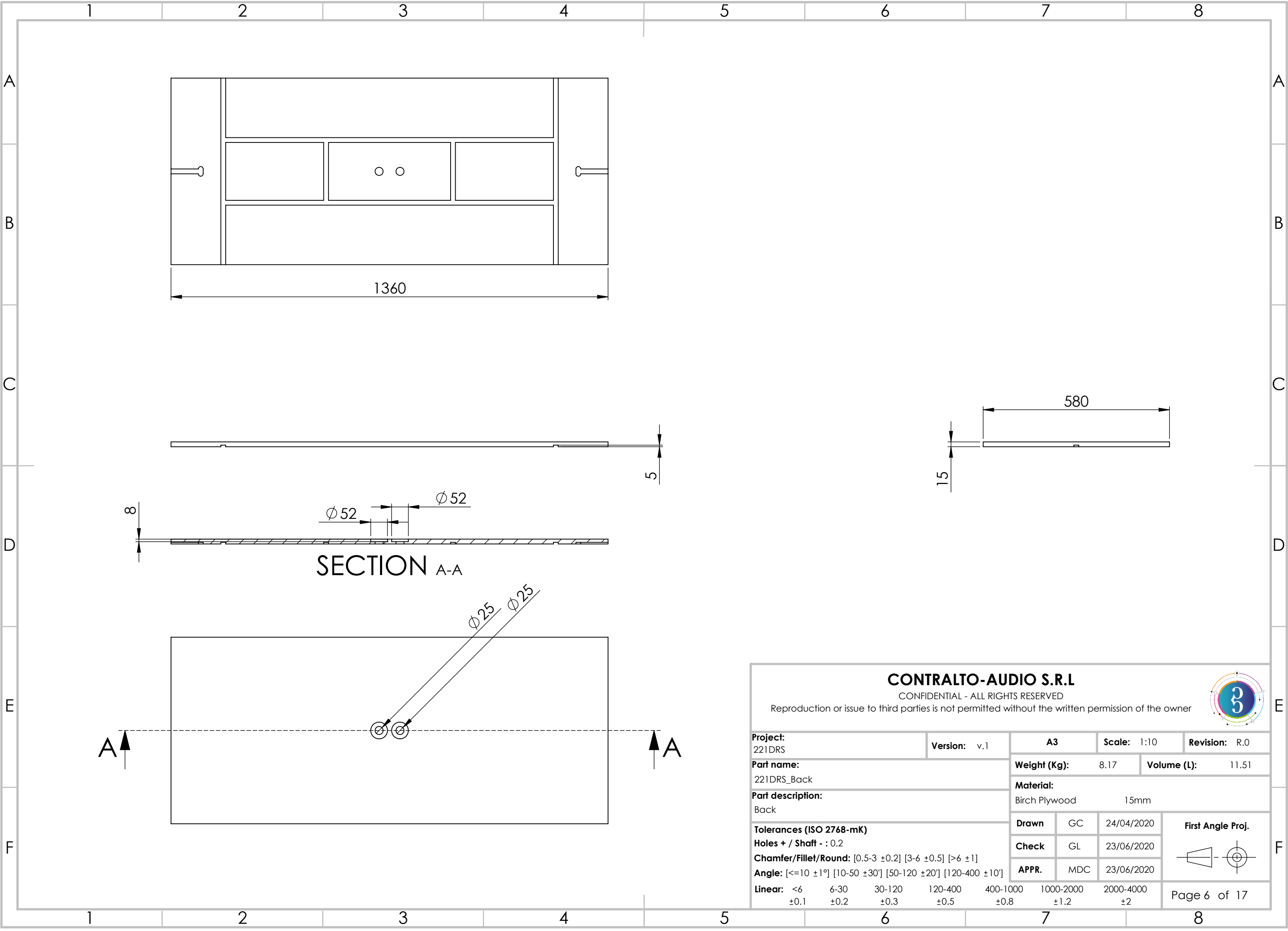


CONTRALTO-AUDIO S.R.L

CONFIDENTIAL - ALL RIGHTS RESERVED  
Reproduction or issue to third parties is not permitted without the written permission of the owner



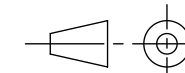
<b>Project:</b> 221DRS				<b>Version:</b> v.1		<b>A3</b>		<b>Scale:</b> 1:10		<b>Revision:</b> R.0	
<b>Part name:</b> 221DRS_Side						<b>Weight (Kg):</b> 4.82		<b>Volume (L):</b> 6.79			
<b>Part description:</b> Side						<b>Material:</b> Birch Plywood 15mm					
<b>Tolerances (ISO 2768-mK)</b> <b>Holes + / Shaft - : 0.2</b> <b>Chamfer/Fillet/Round:</b> [0.5-3 ±0.2] [3-6 ±0.5] [>6 ±1] <b>Angle:</b> [<=10 ±1°] [10-50 ±30°] [50-120 ±20°] [120-400 ±10°] <b>Linear:</b> <6 6-30 30-120 120-400 400-1000 1000-2000 2000-4000 ±0.1 ±0.2 ±0.3 ±0.5 ±0.8 ±1.2 ±2						<b>Drawn</b>	GC	24/04/2020	<b>First Angle Proj.</b> 		
						<b>Check</b>	GL	23/06/2020			
						<b>APPR.</b>	MDC	23/06/2020			
						Page 5 of 17					

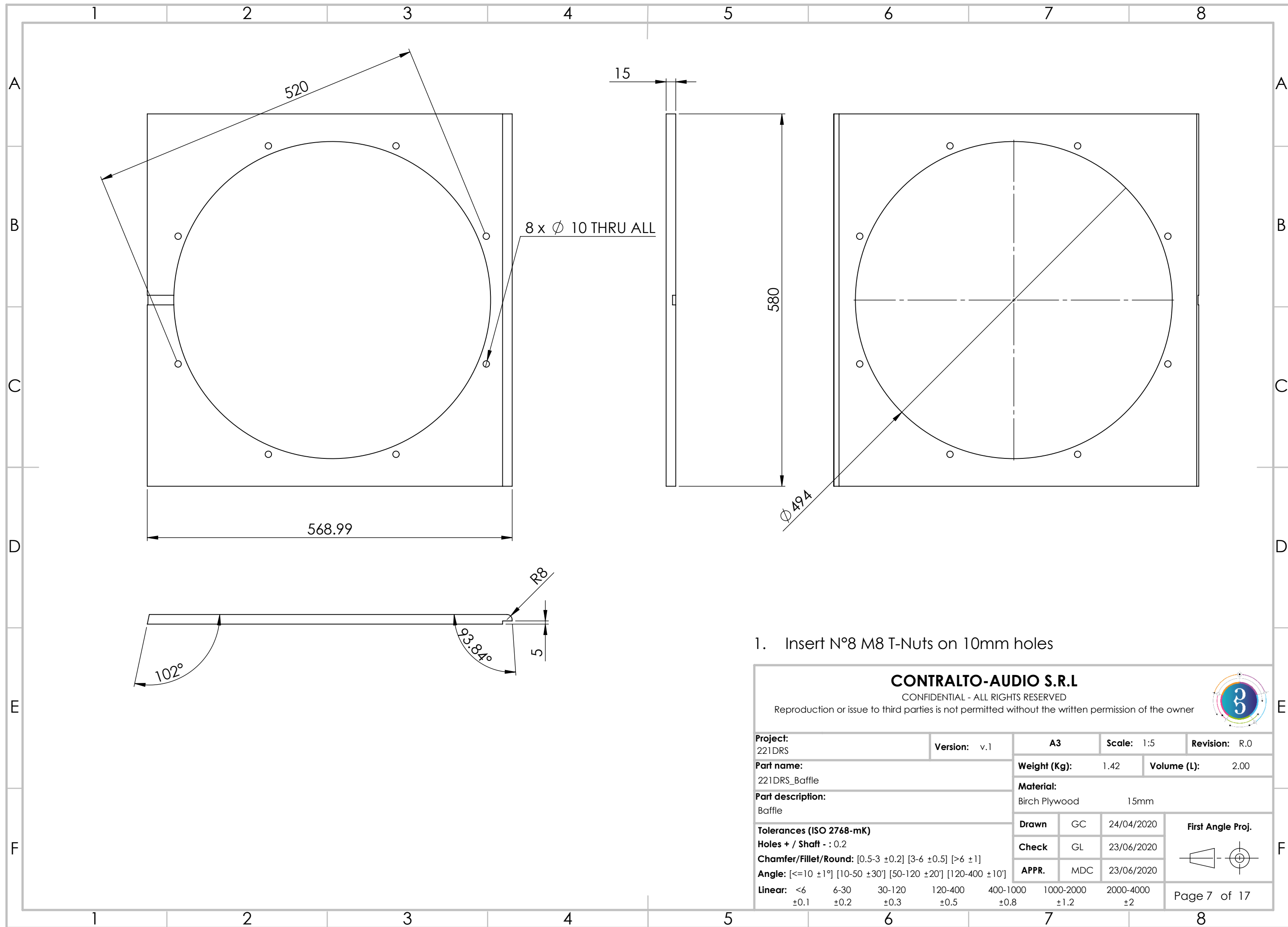


CONTRALTO-AUDIO S.R.L

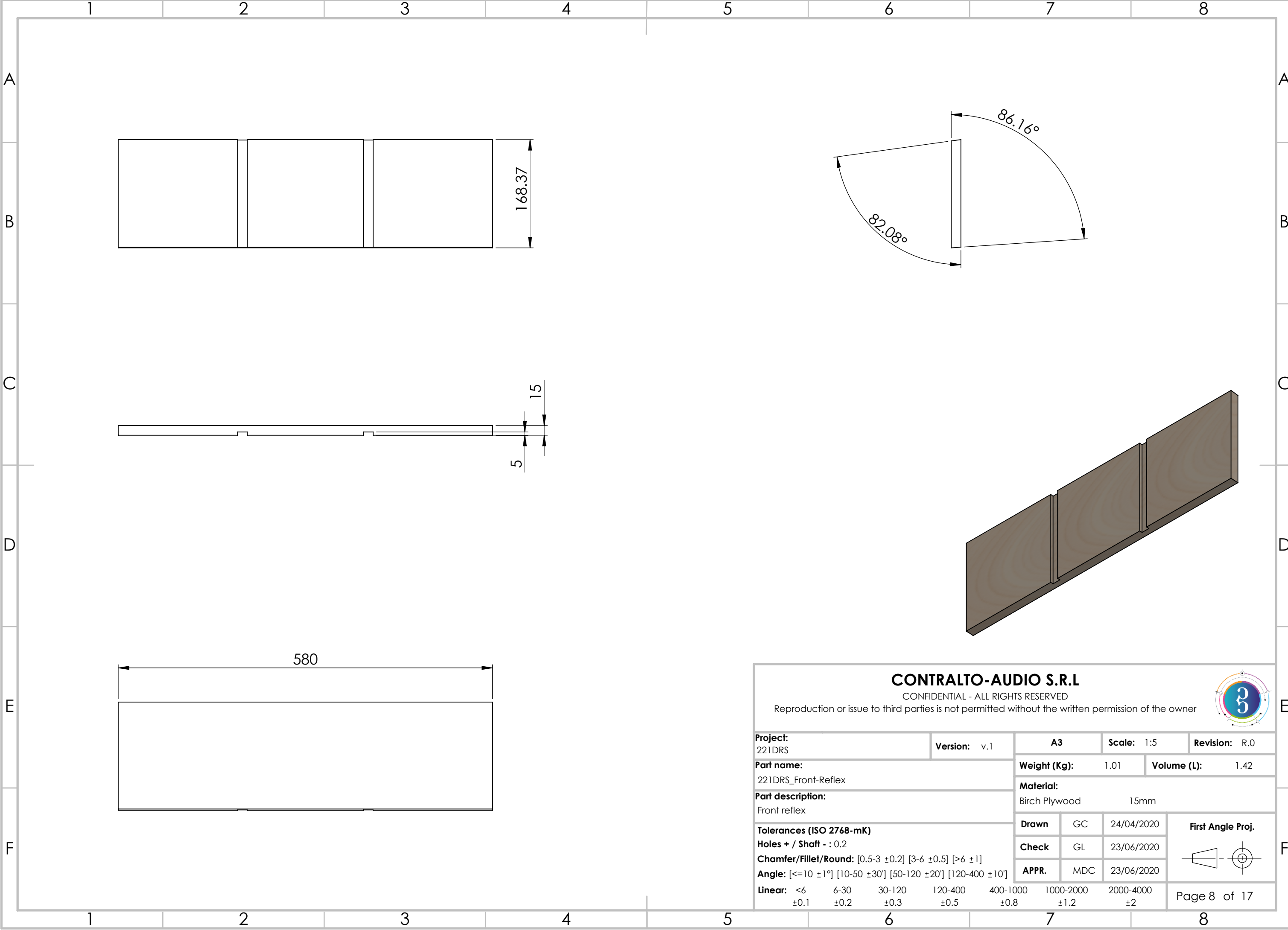
CONFIDENTIAL - ALL RIGHTS RESERVED  
Reproduction or issue to third parties is not permitted without the written permission of the owner



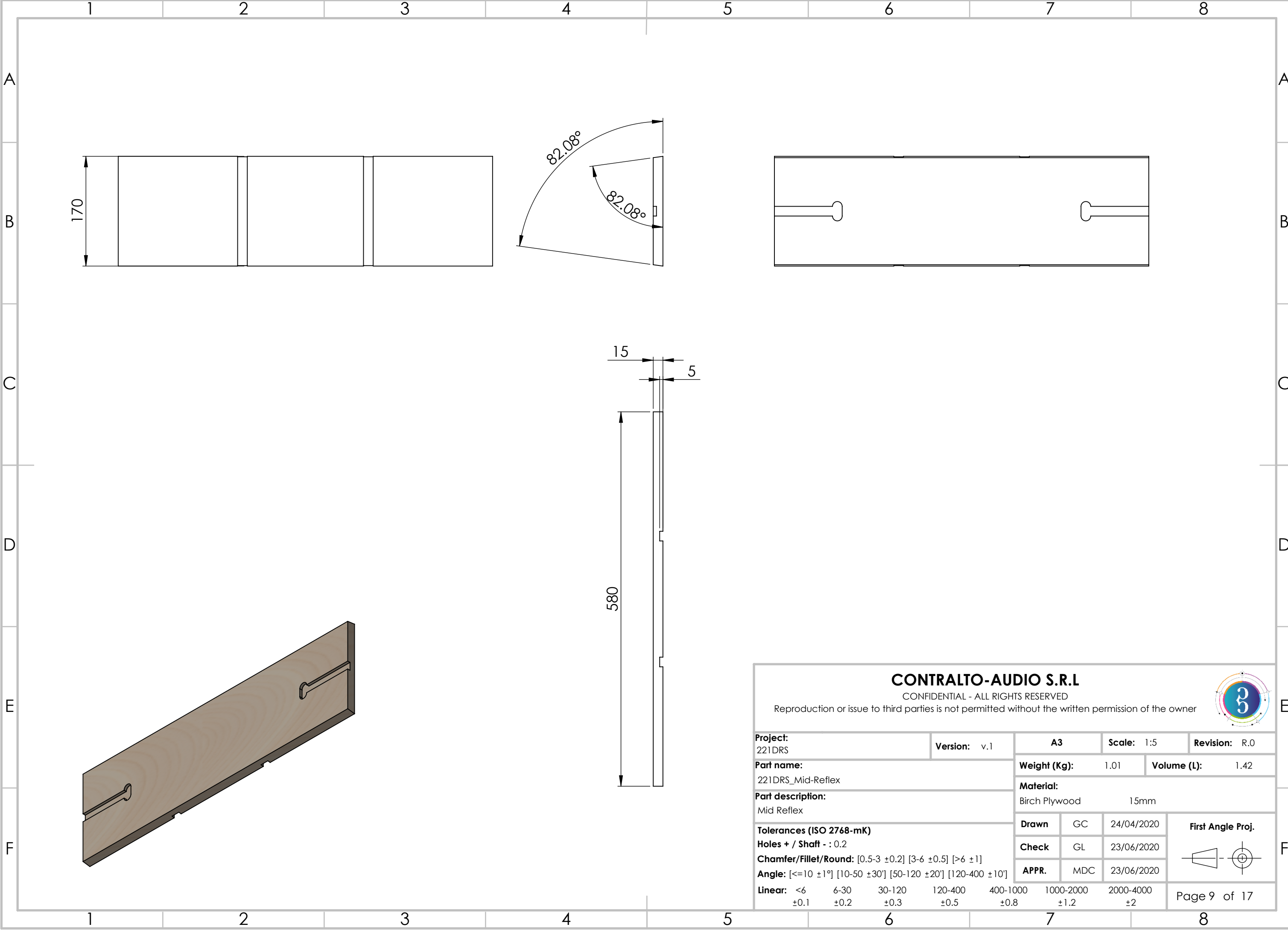
Project: 221DRS				Version: v.1		A3		Scale: 1:10		Revision: R.0	
Part name: 221DRS_Back						Weight (Kg): 8.17		Volume (L): 11.51			
Part description: Back						Material: Birch Plywood 15mm					
Tolerances (ISO 2768-mK) Holes + / Shaft - : 0.2 Chamfer/Fillet/Round: [0.5-3 ±0.2] [3-6 ±0.5] [>6 ±1] Angle: [≤10 ±1°] [10-50 ±30°] [50-120 ±20°] [120-400 ±10°] Linear: <6 ±0.1    6-30 ±0.2    30-120 ±0.3    120-400 ±0.5    400-1000 ±0.8    1000-2000 ±1.2    2000-4000 ±2						Drawn	GC	24/04/2020		<div>First Angle Proj.</div> 	
						Check	GL	23/06/2020			
						APPR.	MDC	23/06/2020			
						Page 6 of 17					









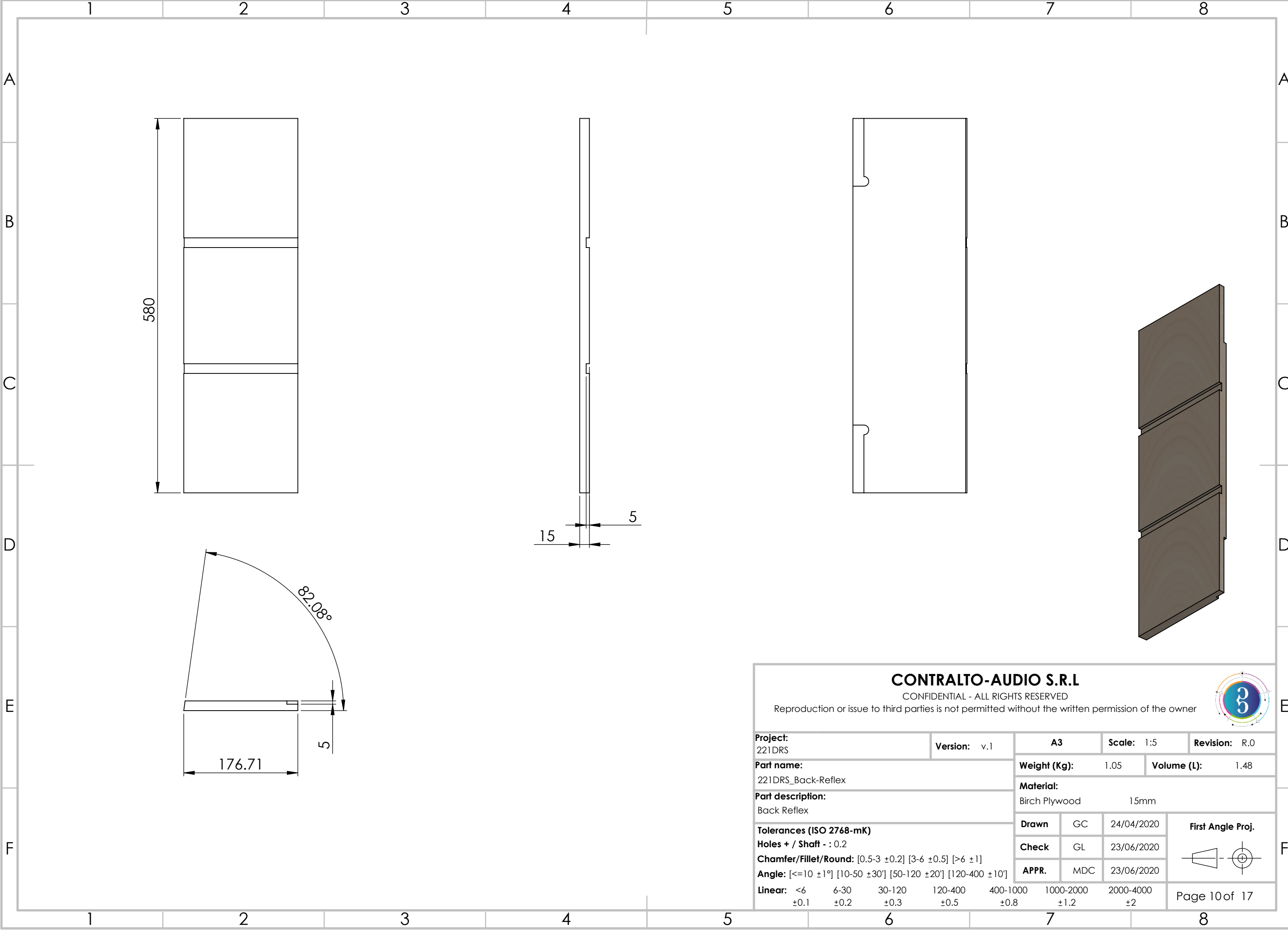


CONTRALTO-AUDIO S.R.L

CONFIDENTIAL - ALL RIGHTS RESERVED  
Reproduction or issue to third parties is not permitted without the written permission of the owner



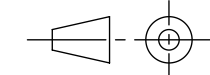
<b>Project:</b> 221DRS				<b>Version:</b> v.1		<b>A3</b>		<b>Scale:</b> 1:5		<b>Revision:</b> R.0	
<b>Part name:</b> 221DRS_Mid-Reflex						<b>Weight (Kg):</b> 1.01		<b>Volume (L):</b> 1.42			
<b>Part description:</b> Mid Reflex						<b>Material:</b> Birch Plywood 15mm					
<b>Tolerances (ISO 2768-mK)</b> <b>Holes + / Shaft - : 0.2</b> <b>Chamfer/Fillet/Round:</b> [0.5-3 ±0.2] [3-6 ±0.5] [>6 ±1] <b>Angle:</b> [<=10 ±1°] [10-50 ±30°] [50-120 ±20°] [120-400 ±10°] <b>Linear:</b> <6 6-30 30-120 120-400 400-1000 1000-2000 2000-4000 ±0.1 ±0.2 ±0.3 ±0.5 ±0.8 ±1.2 ±2						<b>Drawn</b>	GC	24/04/2020	<b>First Angle Proj.</b> 		
						<b>Check</b>	GL	23/06/2020			
						<b>APPR.</b>	MDC	23/06/2020			
						Page 9 of 17					

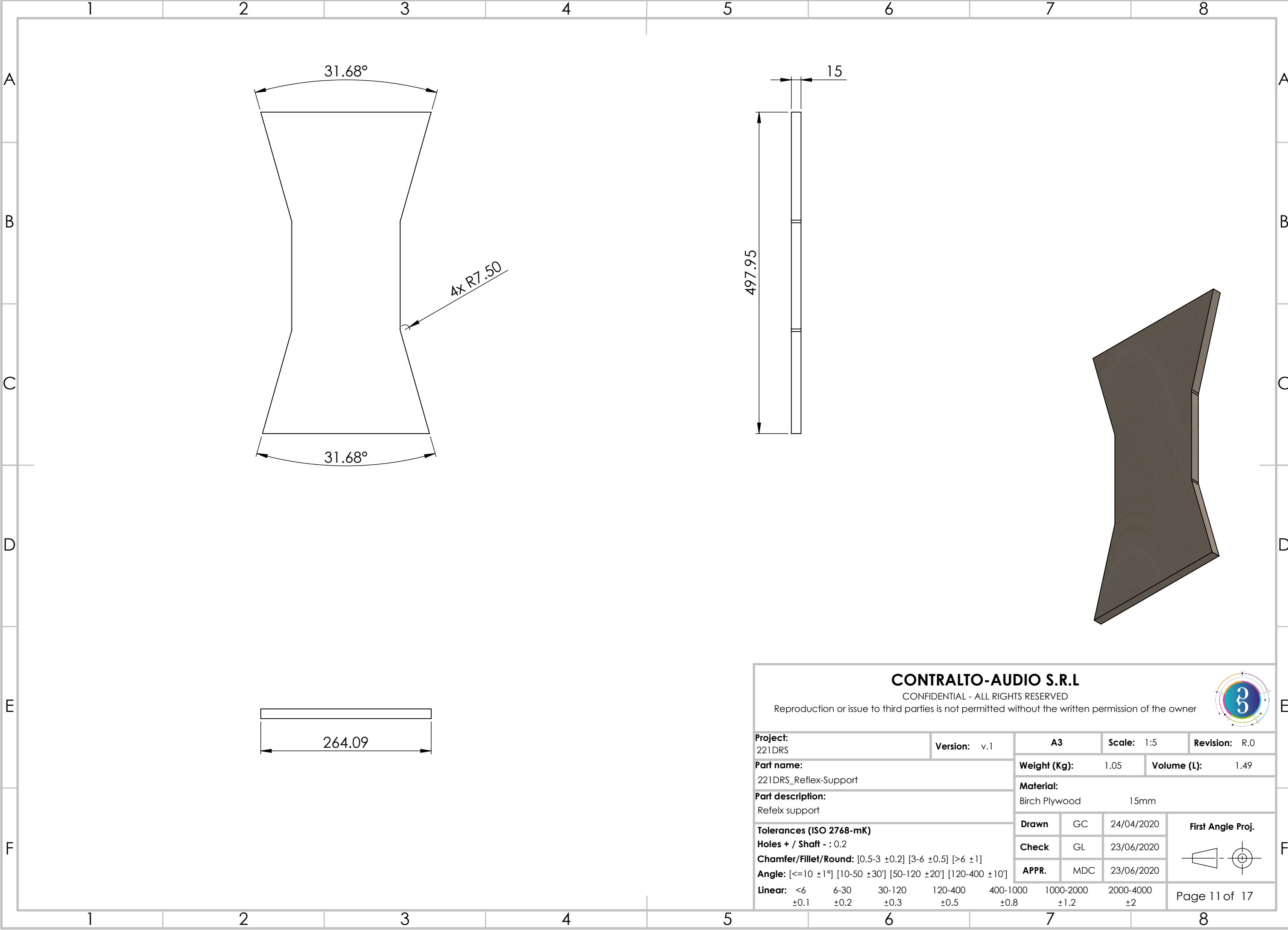


CONTRALTO-AUDIO S.R.L

CONFIDENTIAL - ALL RIGHTS RESERVED  
Reproduction or issue to third parties is not permitted without the written permission of the owner



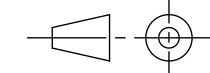
<b>Project:</b> 221DRS				<b>Version:</b> v.1		<b>A3</b>		<b>Scale:</b> 1:5		<b>Revision:</b> R.0	
<b>Part name:</b> 221DRS_Back-Reflex						<b>Weight (Kg):</b> 1.05		<b>Volume (L):</b> 1.48			
<b>Part description:</b> Back Reflex						<b>Material:</b> Birch Plywood 15mm					
<b>Tolerances (ISO 2768-mK)</b> <b>Holes + / Shaft - : 0.2</b> <b>Chamfer/Fillet/Round:</b> [0.5-3 ±0.2] [3-6 ±0.5] [>6 ±1] <b>Angle:</b> [<=10 ±1°] [10-50 ±30'] [50-120 ±20'] [120-400 ±10'] <b>Linear:</b> <6 6-30 30-120 120-400 400-1000 1000-2000 2000-4000 ±0.1 ±0.2 ±0.3 ±0.5 ±0.8 ±1.2 ±2						<b>Drawn</b>	GC	24/04/2020	<b>First Angle Proj.</b> 		
						<b>Check</b>	GL	23/06/2020			
						<b>APPR.</b>	MDC	23/06/2020			
						Page 10 of 17					

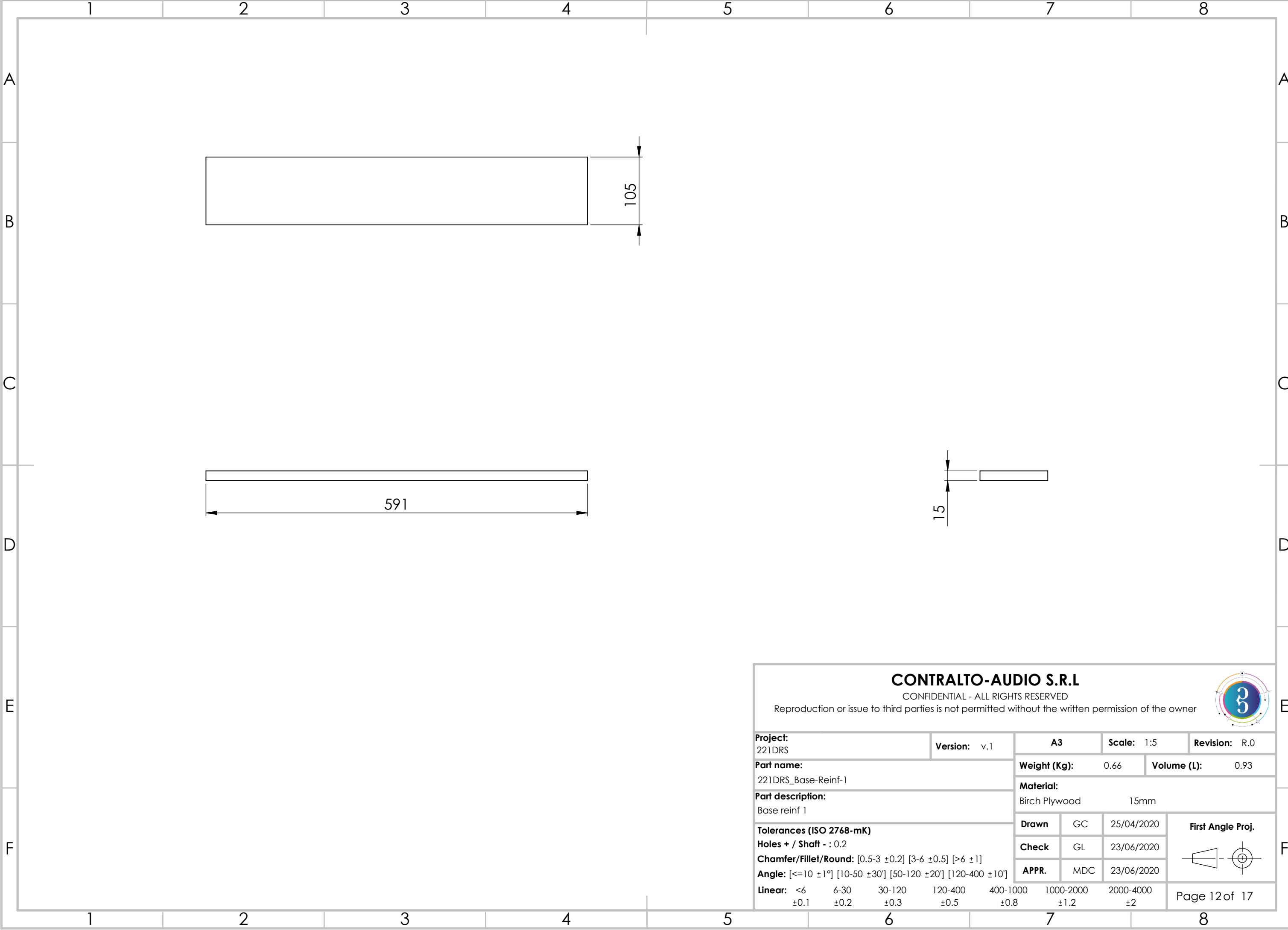


CONTRALTO-AUDIO S.R.L

CONFIDENTIAL - ALL RIGHTS RESERVED  
Reproduction or issue to third parties is not permitted without the written permission of the owner



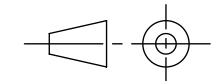
<b>Project:</b> 221DRS				<b>Version:</b> v.1		<b>A3</b>		<b>Scale:</b> 1:5		<b>Revision:</b> R.0	
<b>Part name:</b> 221DRS_Reflex-Support						<b>Weight (Kg):</b> 1.05		<b>Volume (L):</b> 1.49			
<b>Part description:</b> Refelx support						<b>Material:</b> Birch Plywood 15mm					
<b>Tolerances (ISO 2768-mK)</b> <b>Holes + / Shaft - : 0.2</b> <b>Chamfer/Fillet/Round:</b> [0.5-3 ±0.2] [3-6 ±0.5] [>6 ±1] <b>Angle:</b> [<=10 ±1°] [10-50 ±30°] [50-120 ±20°] [120-400 ±10°] <b>Linear:</b> <6 6-30 30-120 120-400 400-1000 1000-2000 2000-4000 ±0.1 ±0.2 ±0.3 ±0.5 ±0.8 ±1.2 ±2						<b>Drawn</b>	GC	24/04/2020	<b>First Angle Proj.</b> 		
						<b>Check</b>	GL	23/06/2020			
						<b>APPR.</b>	MDC	23/06/2020			
						Page 11 of 17					

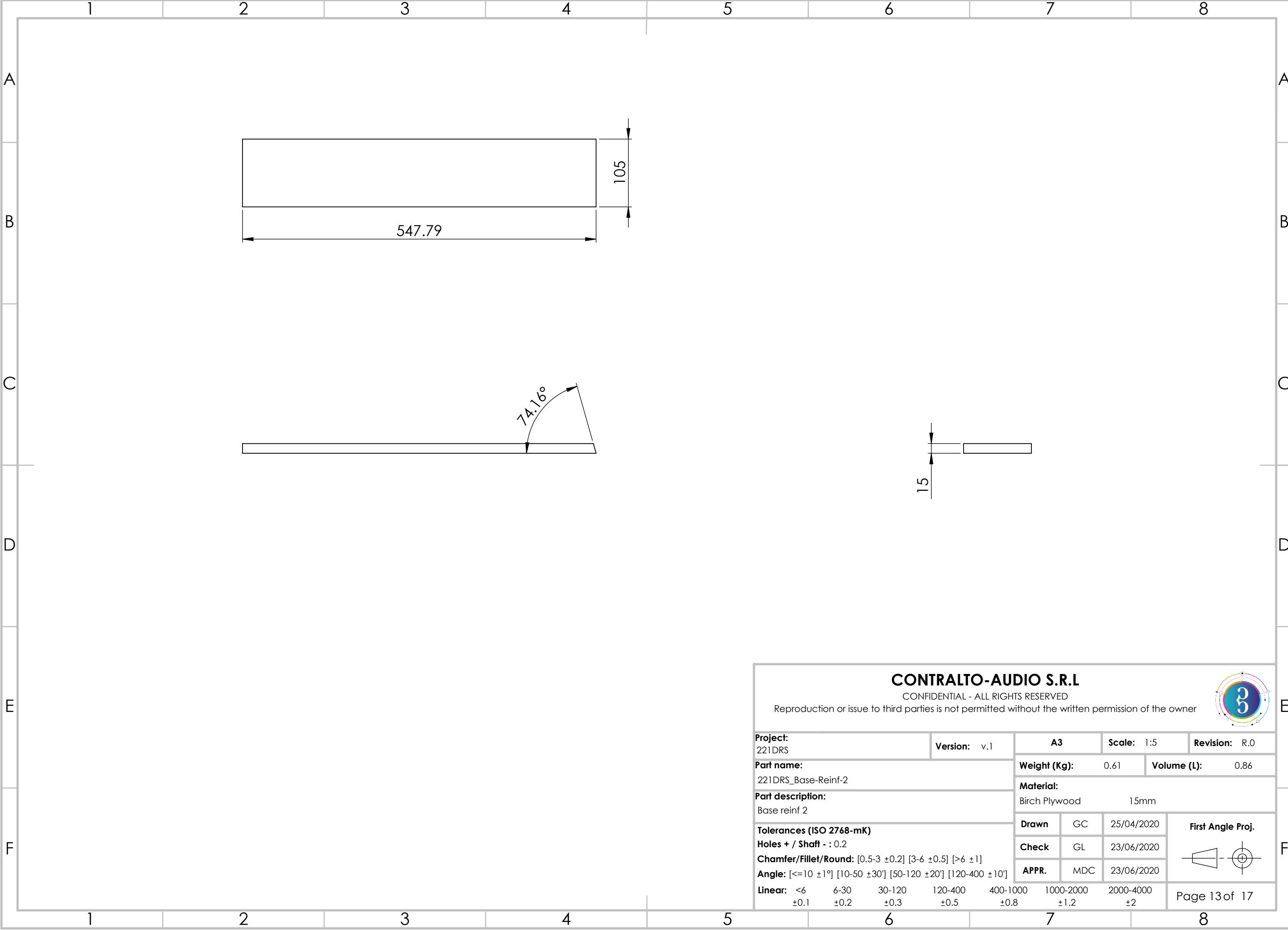


CONTRALTO-AUDIO S.R.L

CONFIDENTIAL - ALL RIGHTS RESERVED  
Reproduction or issue to third parties is not permitted without the written permission of the owner



<b>Project:</b> 221DRS				<b>Version:</b> v.1		<b>A3</b>		<b>Scale:</b> 1:5		<b>Revision:</b> R.0	
<b>Part name:</b> 221DRS_Base-Reinf-1						<b>Weight (Kg):</b> 0.66		<b>Volume (L):</b> 0.93			
<b>Part description:</b> Base reinf 1						<b>Material:</b> Birch Plywood 15mm					
<b>Tolerances (ISO 2768-mK)</b> <b>Holes + / Shaft - : 0.2</b> <b>Chamfer/Fillet/Round:</b> [0.5-3 ±0.2] [3-6 ±0.5] [>6 ±1] <b>Angle:</b> [<=10 ±1°] [10-50 ±30°] [50-120 ±20°] [120-400 ±10°] <b>Linear:</b> <6 ±0.1    6-30 ±0.2    30-120 ±0.3    120-400 ±0.5    400-1000 ±0.8    1000-2000 ±1.2    2000-4000 ±2						<b>Drawn</b>	GC	25/04/2020		<b>First Angle Proj.</b> 	
						<b>Check</b>	GL	23/06/2020			
						<b>APPR.</b>	MDC	23/06/2020			
						Page 12 of 17					

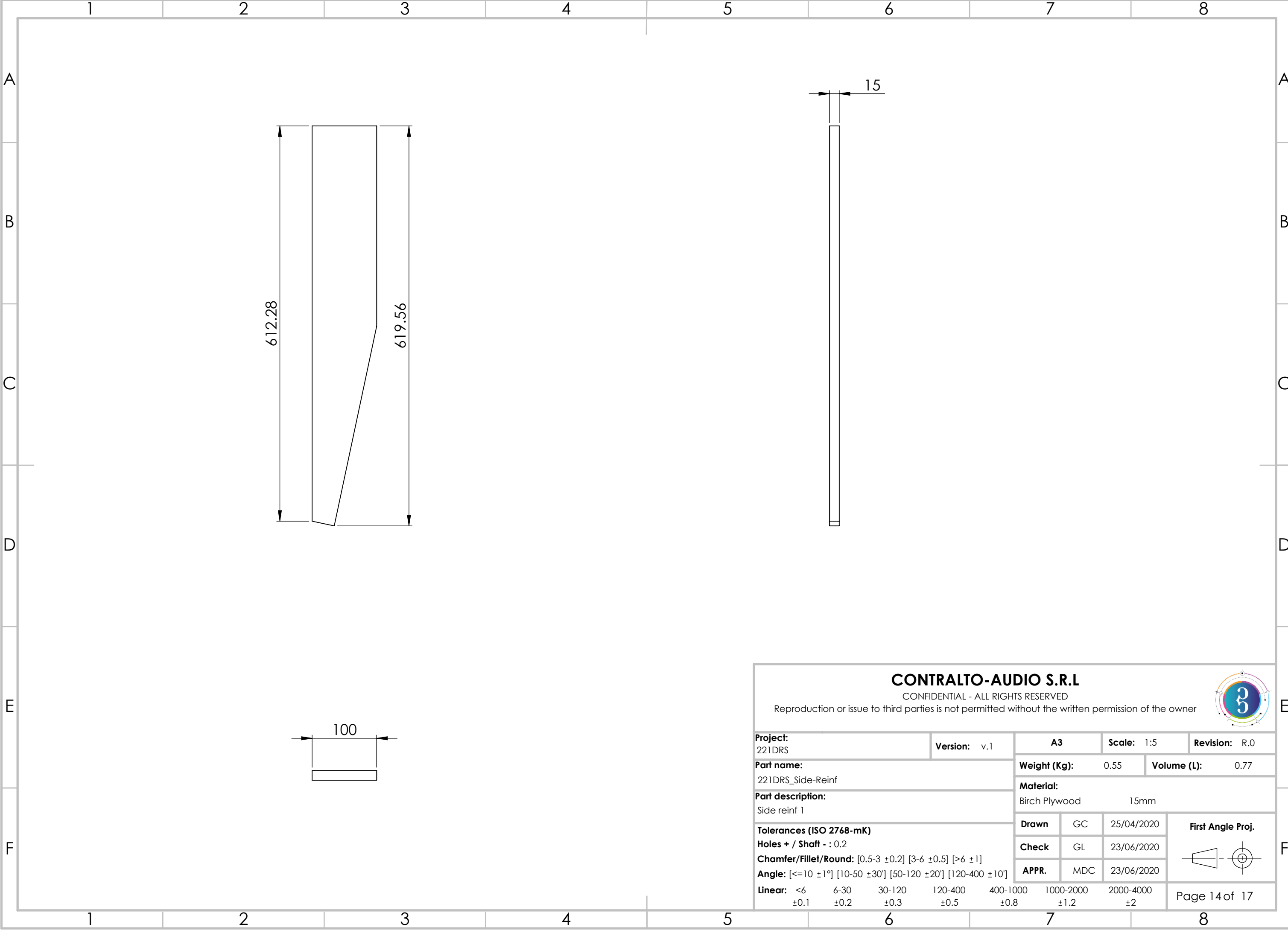


CONTRALTO-AUDIO S.R.L

CONFIDENTIAL - ALL RIGHTS RESERVED  
Reproduction or issue to third parties is not permitted without the written permission of the owner



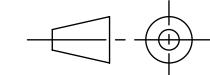
<b>Project:</b> 221DRS				<b>Version:</b> v.1		<b>A3</b>		<b>Scale:</b> 1:5		<b>Revision:</b> R.0	
<b>Part name:</b> 221DRS_Base-Reinf-2						<b>Weight (Kg):</b> 0.61		<b>Volume (L):</b> 0.86			
<b>Part description:</b> Base reinf 2						<b>Material:</b> Birch Plywood 15mm					
<b>Tolerances (ISO 2768-mK)</b> <b>Holes + / Shaft - : 0.2</b> <b>Chamfer/Fillet/Round:</b> [0.5-3 ±0.2] [3-6 ±0.5] [>6 ±1] <b>Angle:</b> [<=10 ±1°] [10-50 ±30°] [50-120 ±20°] [120-400 ±10°] <b>Linear:</b> <6 6-30 30-120 120-400 400-1000 1000-2000 2000-4000 ±0.1 ±0.2 ±0.3 ±0.5 ±0.8 ±1.2 ±2						<b>Drawn</b>	GC	25/04/2020		<b>First Angle Proj.</b> 	
						<b>Check</b>	GL	23/06/2020			
						<b>APPR.</b>	MDC	23/06/2020			
						Page 13 of 17					

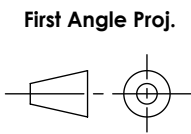


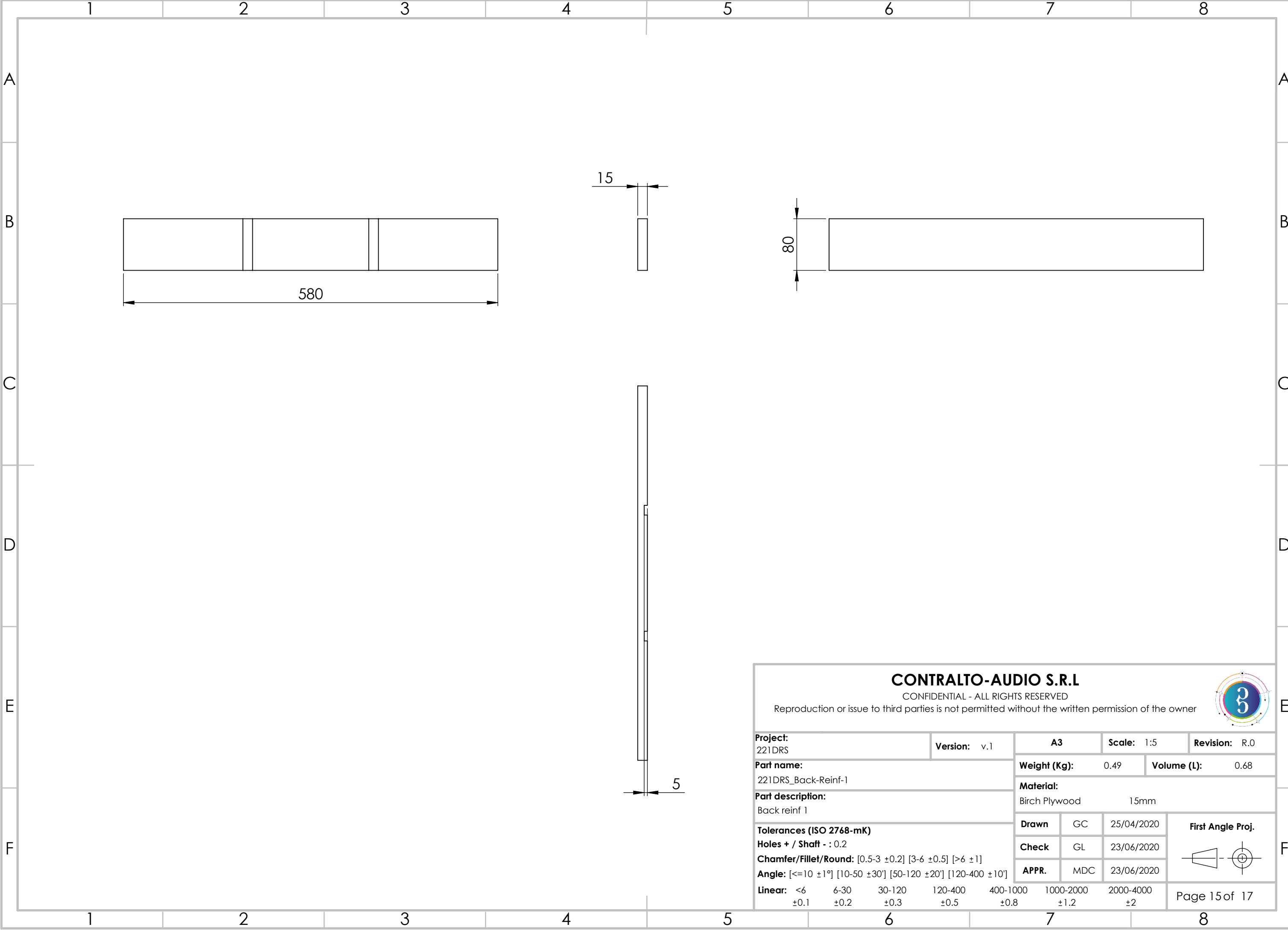
CONTRALTO-AUDIO S.R.L

CONFIDENTIAL - ALL RIGHTS RESERVED  
Reproduction or issue to third parties is not permitted without the written permission of the owner



<b>Project:</b> 221DRS				<b>Version:</b> v.1		<b>A3</b>		<b>Scale:</b> 1:5		<b>Revision:</b> R.0	
<b>Part name:</b> 221DRS_Side-Reinf						<b>Weight (Kg):</b> 0.55		<b>Volume (L):</b> 0.77			
<b>Part description:</b> Side reinf 1						<b>Material:</b> Birch Plywood 15mm					
<b>Tolerances (ISO 2768-mK)</b> <b>Holes + / Shaft - : 0.2</b> <b>Chamfer/Fillet/Round:</b> [0.5-3 ±0.2] [3-6 ±0.5] [>6 ±1] <b>Angle:</b> [<=10 ±1°] [10-50 ±30'] [50-120 ±20'] [120-400 ±10'] <b>Linear:</b> <6 6-30 30-120 120-400 400-1000 1000-2000 2000-4000 ±0.1 ±0.2 ±0.3 ±0.5 ±0.8 ±1.2 ±2						<b>Drawn</b>	GC	25/04/2020		<b>First Angle Proj.</b> 	
						<b>Check</b>	GL	23/06/2020			
						<b>APPR.</b>	MDC	23/06/2020			
						Page 14 of 17					





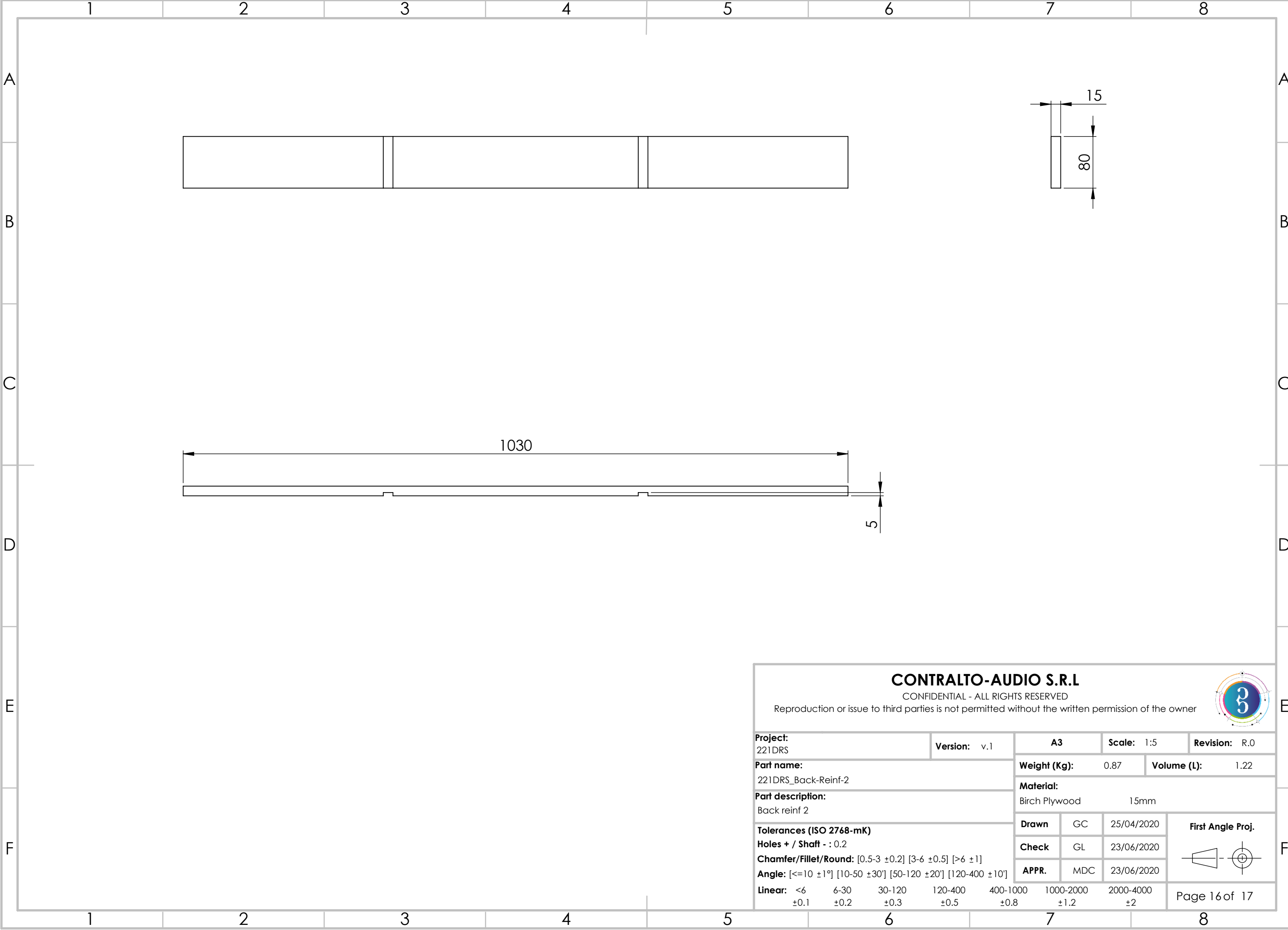
CONTRALTO-AUDIO S.R.L

CONFIDENTIAL - ALL RIGHTS RESERVED  
Reproduction or issue to third parties is not permitted without the written permission of the owner



<b>Project:</b> 221DRS				<b>Version:</b> v.1		<b>A3</b>		<b>Scale:</b> 1:5		<b>Revision:</b> R.0	
<b>Part name:</b> 221DRS_Back-Reinf-1						<b>Weight (Kg):</b> 0.49		<b>Volume (L):</b> 0.68			
<b>Part description:</b> Back reinf 1						<b>Material:</b> Birch Plywood 15mm					
<b>Tolerances (ISO 2768-mK)</b> <b>Holes + / Shaft - : 0.2</b> <b>Chamfer/Fillet/Round:</b> [0.5-3 ±0.2] [3-6 ±0.5] [>6 ±1] <b>Angle:</b> [<=10 ±1°] [10-50 ±30°] [50-120 ±20°] [120-400 ±10°] <b>Linear:</b> <6 6-30 30-120 120-400 400-1000 1000-2000 2000-4000 ±0.1 ±0.2 ±0.3 ±0.5 ±0.8 ±1.2 ±2						<b>Drawn</b>	GC	25/04/2020		<b>First Angle Proj.</b> 	
						<b>Check</b>	GL	23/06/2020			
						<b>APPR.</b>	MDC	23/06/2020			
						Page 15 of 17					



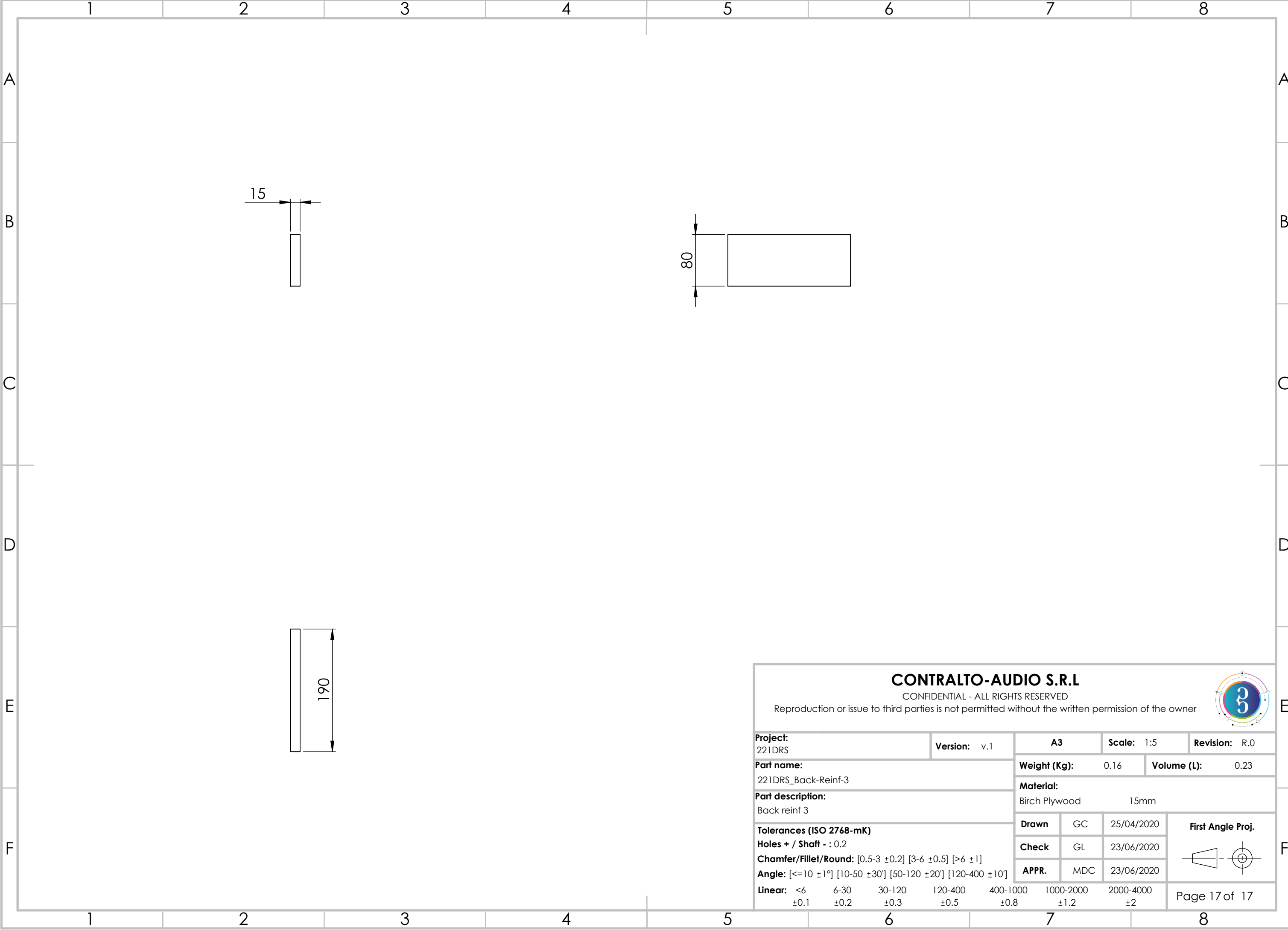


CONTRALTO-AUDIO S.R.L

CONFIDENTIAL - ALL RIGHTS RESERVED  
Reproduction or issue to third parties is not permitted without the written permission of the owner



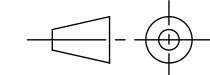
<b>Project:</b> 221DRS				<b>Version:</b> v.1		<b>A3</b>		<b>Scale:</b> 1:5		<b>Revision:</b> R.0	
<b>Part name:</b> 221DRS_Back-Reinf-2						<b>Weight (Kg):</b> 0.87		<b>Volume (L):</b> 1.22			
<b>Part description:</b> Back reinf 2						<b>Material:</b> Birch Plywood 15mm					
<b>Tolerances (ISO 2768-mK)</b> <b>Holes + / Shaft - : 0.2</b> <b>Chamfer/Fillet/Round:</b> [0.5-3 ±0.2] [3-6 ±0.5] [>6 ±1] <b>Angle:</b> [<=10 ±1°] [10-50 ±30°] [50-120 ±20°] [120-400 ±10°] <b>Linear:</b> <6 ±0.1    6-30 ±0.2    30-120 ±0.3    120-400 ±0.5    400-1000 ±0.8    1000-2000 ±1.2    2000-4000 ±2						<b>Drawn</b>	GC	25/04/2020		<b>First Angle Proj.</b> 	
						<b>Check</b>	GL	23/06/2020			
						<b>APPR.</b>	MDC	23/06/2020			
						Page 16 of 17					



CONTRALTO-AUDIO S.R.L

CONFIDENTIAL - ALL RIGHTS RESERVED  
Reproduction or issue to third parties is not permitted without the written permission of the owner



<b>Project:</b> 221DRS				<b>Version:</b> v.1		<b>A3</b>		<b>Scale:</b> 1:5		<b>Revision:</b> R.0	
<b>Part name:</b> 221DRS_Back-Reinf-3						<b>Weight (Kg):</b> 0.16		<b>Volume (L):</b> 0.23			
<b>Part description:</b> Back reinf 3						<b>Material:</b> Birch Plywood 15mm					
<b>Tolerances (ISO 2768-mK)</b> <b>Holes + / Shaft - : 0.2</b> <b>Chamfer/Fillet/Round:</b> [0.5-3 ±0.2] [3-6 ±0.5] [>6 ±1] <b>Angle:</b> [<=10 ±1°] [10-50 ±30°] [50-120 ±20°] [120-400 ±10°] <b>Linear:</b> <6 6-30 30-120 120-400 400-1000 1000-2000 2000-4000 ±0.1 ±0.2 ±0.3 ±0.5 ±0.8 ±1.2 ±2						<b>Drawn</b>	GC	25/04/2020		<b>First Angle Proj.</b> 	
						<b>Check</b>	GL	23/06/2020			
						<b>APPR.</b>	MDC	23/06/2020			
						Page 17 of 17					

